

ARC-Small Grain False Armyworm moth numbers
Caledon and Swellendam
Week 2

Prepared by Goddy Prinsloo

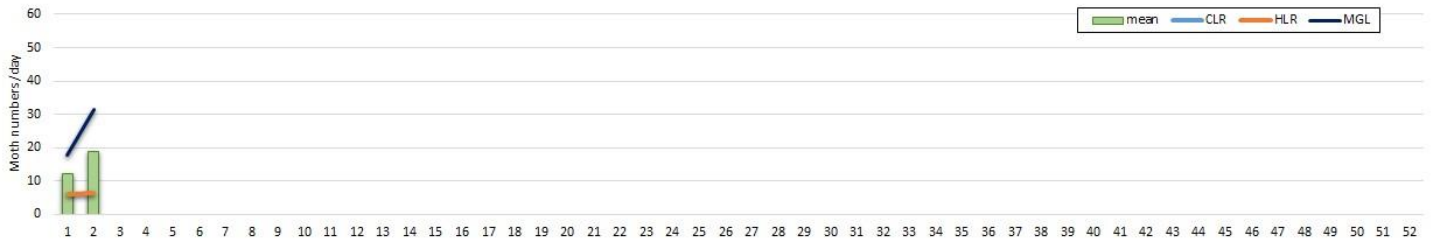


Caledon moth traps

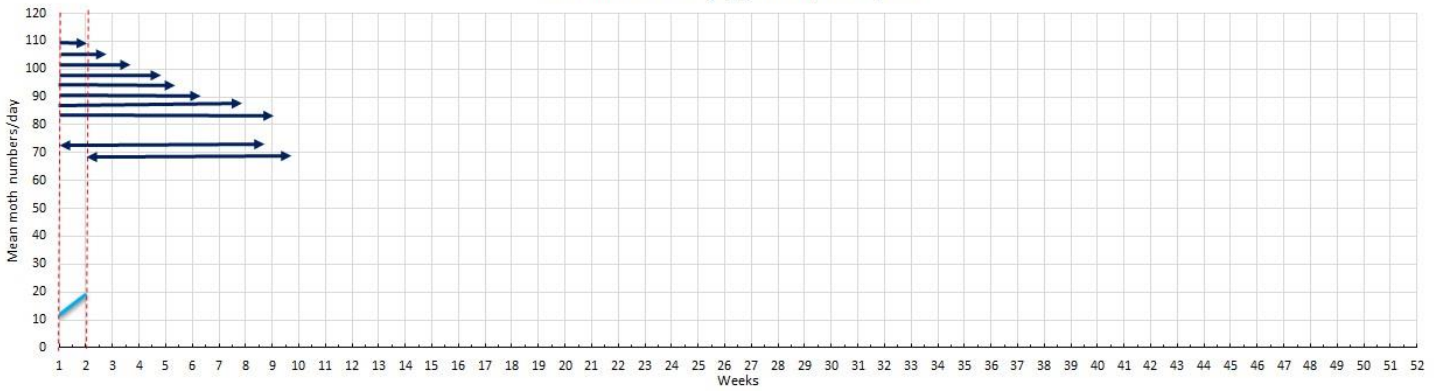
First graph indicates the original data recieved from the farmers.

- The second graph indicates the mean number of moths, while the dark blue arrows indicate the life cycles as forecasted by the average mean daily temperatures. Currently these arrows indicate the end of cycles from the previous year which could develop into new peaks. Higher numbers experienced currently could result in new flight peaks by the end of February
- Table indicate the dates when larvae will be present (left) and when the new moth flights could be happen.

Caledon moth numbers 2021



Caledon: Total (egg-moth) life cycle



Caledon 2021 Larvae										
Mean temperature					Real temperature					
Week	Start	Week	Larvae en	Days	Week	Start	Week	Larvae en	Days	Difference
1	04-Jan	5	01-Feb	29	1	04-Jan				-29
2	11-Jan	6	08-Feb	29	2	11-Jan				-29

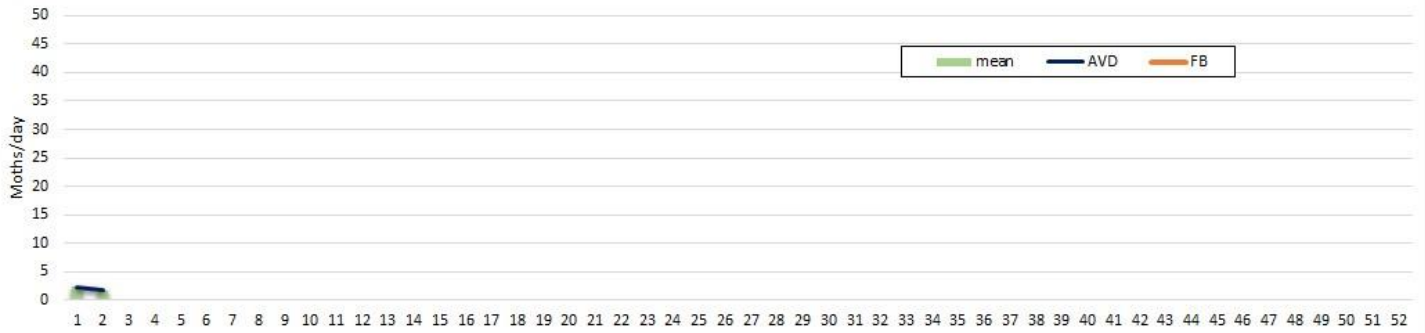
Caledon 2021 New moth peaks										
Mean temperature					Real temperature					
Week	Start	Week	New moth	Days	Week	Start	Week	New moth	Days	Difference
1	04-Jan	8	24-Feb	52	1	04-Jan				-52
2	11-Jan	9	03-Mar	52	2	11-Jan				-52

Swellendam moth traps

First graph indicates the original data recieved from the farmers.

- The second graph indicates the mean number of moths, while the dark blue arrows indicate the life cycles as forecasted by the average mean daily temperatures. Current arrows indicate potential new flight peaks coming from the previous year.

Swellendam moth number 2021



Swellendam : Total (egg -adult) Life cycle

