

**ARC-Small Grain Suction trap aphid numbers 2021**  
Tygerhoek Week 31

Prepared by Goddy Prinsloo

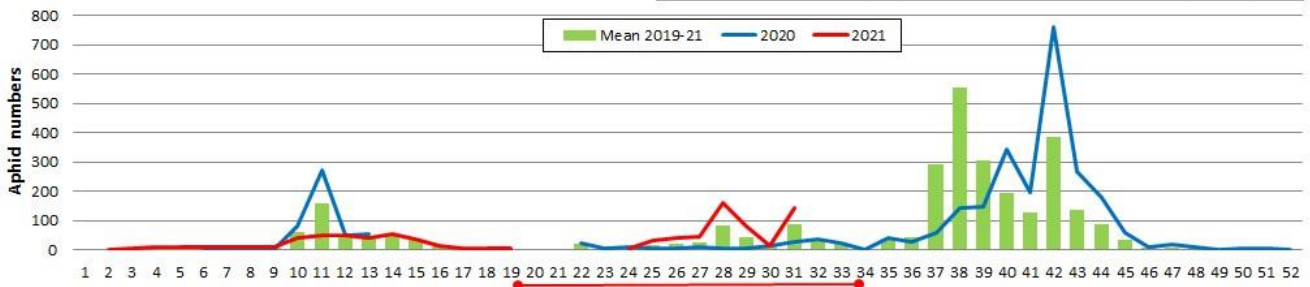


## 2021 Week numbers

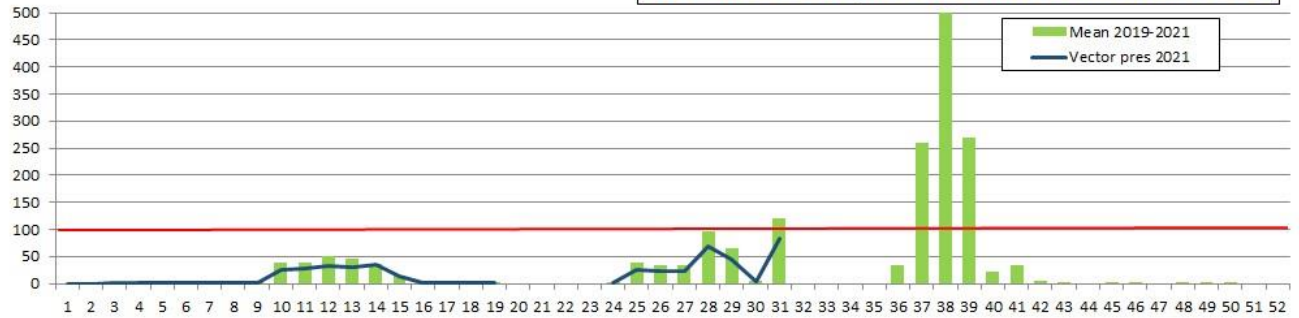
<b>Week #</b>	<b>Begin</b>	<b>End</b>	<b>Week #</b>	<b>Begin</b>	<b>End</b>	<b>Week #</b>	<b>Begin</b>	<b>End</b>	<b>Week #</b>	<b>Begin</b>	<b>End</b>	<b>Week #</b>	<b>Begin</b>	<b>End</b>
<b>1</b>	03-Jan	09-Jan	<b>12</b>	21-Mar	27-Mar	<b>23</b>	06-Jun	12-Jun	<b>34</b>	22-Aug	28-Aug	<b>45</b>	07-Nov	13-Nov
<b>2</b>	10-Jan	16-Jan	<b>13</b>	28-Mar	03-Apr	<b>24</b>	13-Jun	19-Jun	<b>35</b>	29-Aug	04-Sep	<b>46</b>	14-Nov	20-Nov
<b>3</b>	17-Jan	23-Jan	<b>14</b>	04-Apr	10-Apr	<b>25</b>	20-Jun	26-Jun	<b>36</b>	05-Sep	11-Sep	<b>47</b>	21-Nov	27-Nov
<b>4</b>	24-Jan	30-Jan	<b>15</b>	11-Apr	17-Apr	<b>26</b>	27-Jun	03-Jul	<b>37</b>	12-Sep	18-Sep	<b>48</b>	28-Nov	04-Dec
<b>5</b>	31-Jan	06-Feb	<b>16</b>	18-Apr	24-Apr	<b>27</b>	04-Jul	10-Jul	<b>38</b>	19-Sep	25-Sep	<b>49</b>	05-Dec	11-Dec
<b>6</b>	07-Feb	13-Feb	<b>17</b>	25-Apr	01-May	<b>28</b>	11-Jul	17-Jul	<b>39</b>	26-Sep	02-Oct	<b>50</b>	12-Dec	18-Dec
<b>7</b>	14-Feb	20-Feb	<b>18</b>	02-May	08-May	<b>29</b>	18-Jul	24-Jul	<b>40</b>	03-Oct	09-Oct	<b>51</b>	19-Dec	25-Dec
<b>8</b>	21-Feb	27-Feb	<b>19</b>	09-May	15-May	<b>30</b>	25-Jul	31-Jul	<b>41</b>	10-Oct	16-Oct	<b>52</b>	26-Dec	01-Jan
<b>9</b>	28-Feb	06-Mar	<b>20</b>	16-May	22-May	<b>31</b>	01-Aug	07-Aug	<b>42</b>	17-Oct	23-Oct			
<b>10</b>	07-Mar	13-Mar	<b>21</b>	23-May	29-May	<b>32</b>	08-Aug	14-Aug	<b>43</b>	24-Oct	30-Oct			
<b>11</b>	14-Mar	20-Mar	<b>22</b>	30-May	05-Jun	<b>33</b>	15-Aug	21-Aug	<b>44</b>	31-Oct	06-Nov			

**Riviersonderend - Week 31.** Trap samples are collected at the beginning of the week and are then sent to a laboratory where the aphids are sorted, identified and counted. All aphids shown in these graphs are able to transmit Barley Yellow Dwarf Virus. Aphid numbers above 100 could indicate possible problems for the specific area, while an illustrative vector pressure of more than 100 could cause serious virus transmission during the wheat growing season

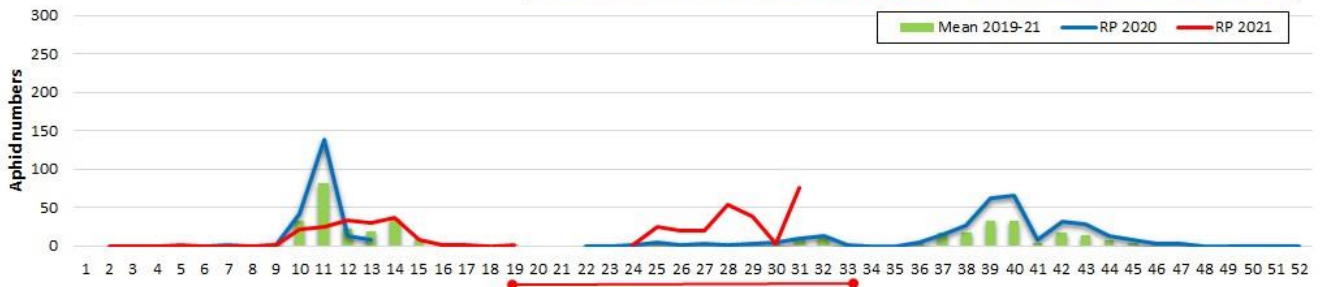
**Total potential vectors - Riviersonderend 2019-21**



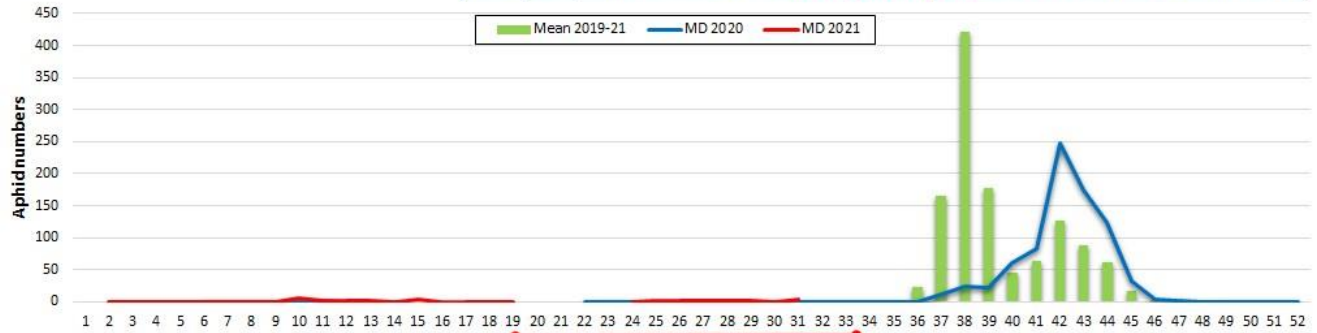
**Potential vector pressure Riviersonderend - 2021**



***Rhopalosiphum padi* - oat aphid - Riviersonderend 2019-21**



***Metopolophium dirhodum* - Rose grien aphid - Riviersonderend 2019-21**



***Sitobion* spp - English grain aphid - Riviersonderend 2019-21**

